

ENGLISH VERSION

ACS Rack Cabinets 2026

VERSIONE ITALIANA





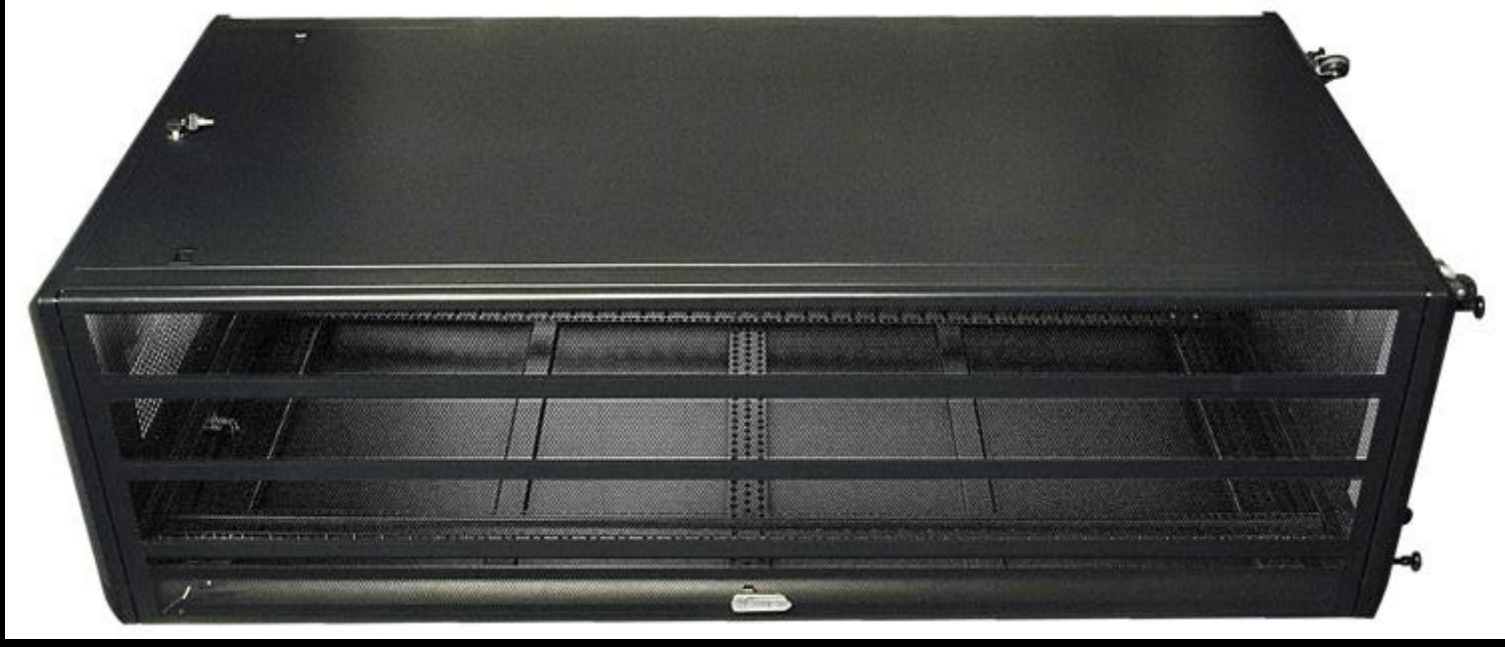
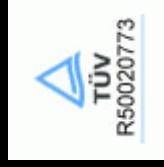
ALL CONNECT SYSTEMS[®]

www.allconnectsystems.com

ACS

Network

Rack



ALL Connect Systems

ACS Glassed Door Style Rack Cabinets

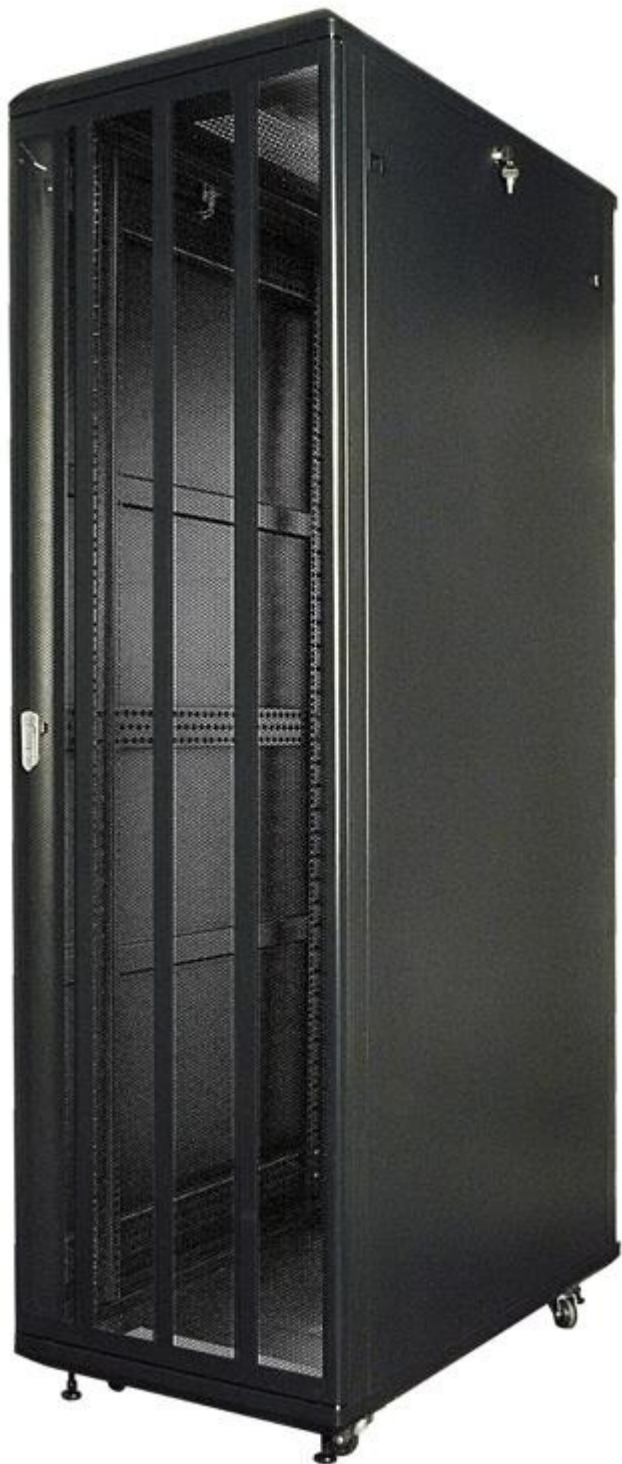
- Comply with ANSI/EIA RS-310-D, DIN41497 part 1, IEC297-2, DIN41494 part 7, GB/T3047.2-92 standards.
- Compatible with 19-inch standard, metric standard and ETSI standard Exquisite design with precision, dimensions and craftsmanship.
- Color is black RAL9004 or RAL9005
- Glassed Front Door / Vented Rear Door enable ventilation and reliable operation.
- Swiveling wheels and legs can be jointly installed to withstand up to 950kg maximum carrying capacity and 450kg mobile carrying capacity.
- Several lockable wiring holes on top/bottom, size of the large hole at the bottom adjustable.
- Easy-to-disassemble front/rear/left/right doors enable convenient operation from any side of the cabinet.
- Optional installation of base enables the cabinet to stay in a fixed position while meeting requirements of under-base wiring/ventilation.
- Linkage cabinet, full series of optional accessories.
- Door opening angle 180o
- Removable side panels with lock.
- 4 Fans are installed in two ways operation.
- 1 Fixed Shelf.
- Power Distribution Unit with 8 outlets.

ALL Connect Systems Family Models with different Capacities, depth, width:

Part Numbers				
Capacity	Width(mm)	Depth(mm)		
		600mm	800mm	1000mm
47U	600mm	ACS-RFH-05A-4766	ACS-RFH-05A-4768	ACS-RFH-05A-476100
42U		ACS-RFH-05A-4266	ACS-RFH-05A-4268	ACS-RFH-05A-426100
36U		ACS-RFH-05A-3666	ACS-RFH-05A-3668	ACS-RFH-05A-366100
47U	800mm	-	ACS-RFH-05A-4788	ACS-RFH-05A-478100
42U		-	ACS-RFH-05A-4288	ACS-RFH-05A-428100
36U		-	ACS-RFH-05A-3688	ACS-RFH-05A-368100

Please check the full part numbers on index

www.allconnectsystems.com



Quick Release Doors: Available in four styles, doors are reversible to open right or left and interchangeable front-to-rear. Electronic locks can be added to all doors. A space-saving double door is also available.

High-Flow Perforated Metal Door: High-Flow Perforated Metal Door provides the security of a solid metal door with 63% airflow. Use High-Flow Perforated Metal Door on the front or rear of cabinets to encourage front-to-rear airflow through rack-mount equipment.



19" Rack-Mount Power Strip:

Distribute power to multiple pieces of equipment using only one rack-mount space (1 RMU). Available surge protected and with twist-lock plugs. High-voltage, multi-input, and three-phase models are also available.



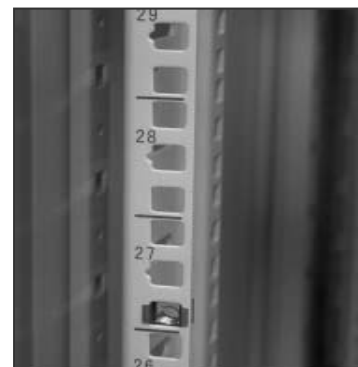
19" Horizontal Wire Management Panel:

Place above or below patch Panels and network switches to organize patch cords and equipment cords. Use with the Vertical Cable Manager. Cable spools provide a smooth horizontal-to-vertical transition.

Find more information about ALL Connect Systems Freestanding Cabinets at:
www.allconnectsystems.com

ACS 19" Mounting Angle Panels:

19" mounting angle panels are supplied in 2x pairs to provide 19" mounting positions on universal centers. The centre of each U height is notched, making the positioning of cage nuts much simpler. Simple 19" panel mounts may be attached directly to the corner vertical, 60mm from the front door, or onto panel mount angle supports giving adjustment throughout the depth of the rack in 20mm increments. They allow directly fixed chassis trays to be used when the panel mounts are fitted onto the verticals. Simple 19" panel mounts have no side mounting positions. These 19" mounting panel angles are adjustable to front and rear gives flexibility to customers to choose the proper width of their equipments. The 19" mounting angel is in S-shaped to house all major Servers, Switches, Routers, UPS's on the market.

**ACS Frames:**

The frame comprises of 4 symmetrical vertical frames of steel. In case of ACS racks with width 800mm, 12 terminal blocks of steel (3 blocks of steel per each 19" mounting angle panel: 6 on front and another 6 on back) are installed between the 19" mounting angle panels and the frames. Grounding tape installed between the doors and the housing frames (Optional).

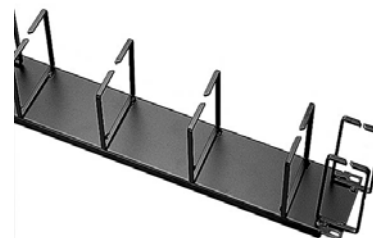
ACS 19" Horizontal Wire Management Panel:

Place above or below Patch Panels and Network Switches to organize patch cords and equipment cords. Use with the Vertical Cable Manager. Cable spools provide a smooth horizontal-to-vertical transition for varied cable insertion.

The horizontal cable management can be used with all patch panels, Patch Cords, PDS and any rack cabinet mount products. It mounts on standard 19" racks or cabinets and provided a clean, beautiful and simple means of organizing from small to large bundles of cables and patch cord.

**Features and Benefits:**

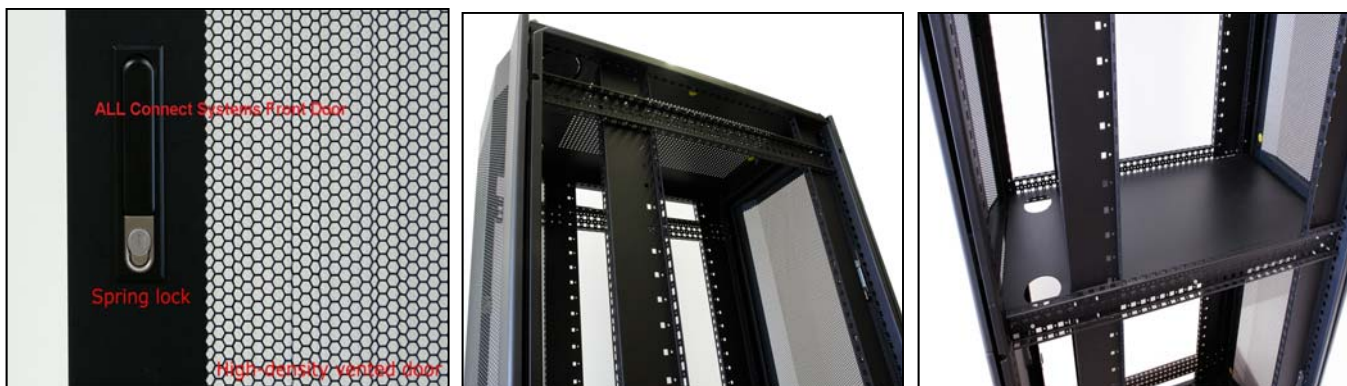
- Standard EIA 19" rack and Cabinet mount.
- Management improves the look of a closet or workstation.
- It is an essential element for easy add-on, moves or changes.
- It is crucial to maintaining cable integrity.
- Light weight, easy to be installed or removed.
- Cable management in the rack provides tool-less operations and extra space for hot air to pass from the rack

**ACS Intelligent Racks (Optional):**

Monitoring improve uptime and staff productivity. It will help IT administrators and facilities managers achieve a number of important corporate performance goals relating to efficiency and productivity, as well as benefit the company's overall environmental initiatives in informed capacity planning decisions and save power and money in addition to take a step towards becoming a more green data center.

Features and Benefits:

- Real time monitoring of rack's temperature and displaying the current temperature and humidity.
- Real time monitoring of power and displaying the voltage and current usage.
- Real time monitoring of door status (open/closed). The administrators who have the rights to access the rack, they may use Electronic Access using IC cards or entering the correct numeric password to open the door of the rack.
- More add-on intelligent features like smoke detectors, lighting and alarm functions could also be installed:
- ACS Lamp 84 LED's with zero noise effect on UTP/STP copper cable.
- ACS Digital Display temp meter: it shows the temp inside and outside the rack in °C/°F degrees.
- ACS movement sensor to detect and alarm the unauthorized access of the doors of ACS racks.



ACS Quick Release Doors:

- Available in Glass or Vented styles.
- Front and Rear Doors could be Single Sheet Glass/Vented Doors or Split Divided Double Sectional Doors (space-saving split/divided double doors)
- In case of Glass Doors, glass is 5mm thickness and it is non-breakable single-pane safety glass.
- In case of vented Front/Rear doors, 86% is vented space enable ventilation and reliable operation.
- Front and Rear Doors are reversible to open right or left and interchangeable front-to-rear.
- All doors are easy-to-disassemble Front/Rear/Left/Right doors enable convenient operation from any side of the cabinet.
- Side doors are removable and easily fitted into position using smooth action slam latches.
- The side door panels are removable and with key lock.
- A center grommet may be removed and replaced with a lock if required.
- Electronic locks can be added to all doors.

ACS Split/Divided Double Door (Glass or Vented): for space saving ACS Split/Divided Double Doors for both Front and Rear doors could be used. Available in Glass or Perforated Vented styles with 86% is vented space enable ventilation and reliable operation.

- The Glass Door type, the glass is 5mm thickness and it is non-breakable single-pane safety glass.
- The Vented Front/Rear doors, 86% is vented space enable ventilation and reliable operation.
- The opening angle is 135° only.

ACS Single Sheet Door (Glass or Vented):

- The Vented Front/Rear doors, 86% is vented space enable ventilation and reliable operation.
- The Glass Door type, the glass is 5mm thickness and it is non-breakable single-pane safety glass.
- The opening angle is 180°.

ACS High-Flow Perforated Metal Door: High-Flow Perforated Vented Metal Doors provide the security of a solid metal door with 86% airflow. Use High Flow Perforated Metal Door on the front or rear of cabinets to encourage front-to-rear airflow through rack-mount equipment.

ACS 19" Rack-Mount Power Strip (PDU):

Horizontal PDU distributes power to multiple pieces of equipment using only one rack mount space (1RMU). Available surge protected and with twist-lock plugs. High-voltage, multi-input, and industrial plugs with 16/32Amp are also available. Power Distribution Units are CE marked - conforms to CEI EN 60439-1 regulation with 9-ways for Europe style or 8-ways for UK Style. Industrial Socket, IEC320 C13, C16, C19 are also available. Vertical PDU is also available with 10 Sockets or with 12 sockets.



ACS Earthing Kit:

Earthing Kit is supplied with ACS Racks comply with EIA/TIA 607 standards.

ACS Delivering the Industry's Most Comprehensive Cable Management Solutions:

Whether you are upgrading your current infrastructure or designing a new installation, trust the experts at ALL Connect Systems ACS products to deliver the most comprehensive line of cable management products in the industry. ACS Cable Management sets the standard by providing:

Critical Cat 6a and Fiber Support!

- Designed to meet ANSI/TIA/EIA installation guidelines for Cat 6a cabling and fiber.
- Proper bend radii ensures maximum quality of data transmission.
- Meets high-density cabling requirements.



ALL Connect Systems ACS Vertical Cable Managers:

ALL Connect Systems ACS Rack Cabinets have integrated 2x cable management full height space along of both sides of the rack-mount space (for width 800mm only). Proper cable management is integral to the performance and effectiveness of your network. Managing and maintaining cables and cords provides the critical support, reliability and flexibility needed to sustain and grow your network capabilities. Two Vertical Cable Manager is included with every ACS Cabinet. Adjust the depth of the cable manager to align with equipment to guide cables directly to the connection.

ACS Cable Management Solutions will help you!

- Streamline the management of your cables and patch cords to optimize the signal quality and network speed of your information exchange.
- Organize cables so that they can be easily traced from start to finish when performing moves, adds and changes, saving you valuable time and money.
- Fulfill high-density cabling requirements while maintaining proper bend radius and slack management for maximum network performance.
- Add additional horizontal or vertical cable managers.
- Cost effective solutions.
- Quality products that simplify network maintenance and costs.
- Perform easy moves, add and changes to connections, saving time and money.
- Support future growth and cabling demands.

At ACS we consider the special requirements from our customers as a new challenge to figure out alternative solutions.

ACS Latch Lock for Front and Rear Doors:

ALL Connect Systems ACS provides 2 Latch Swing Handle Locks (push bottom) for both Front and Rear Doors with the same key are provided with the Rack. Electronic key lock could be supplied (optional). Also Double Split Front or Rear Doors could be Supplied (Optional).



ACS Key Lock for Side Doors:

Also ALL Connect Systems ACS provides the Side Doors could have a standard key lock (Optional) to be provided with the rack. ACS Side Doors are easy to be removable. ACS Side Door Panels include keyed heavy duty plastic pushbutton latches.



ACS Heavy Duty Castors and Adjustable Supporting Legs:

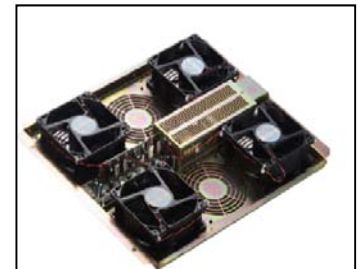
4 Heavy Duty Castors are fitted to the rack, 2 castors are with brakes and 2 castors are without brakes for easier mobility and quick installation.

Adjustable Supporting Legs are screwed directly into the corner blocks. Adjustable Supporting Legs can be adjusted from 25 mm to 50 mm. These allow you to align your rack on uneven surfaces.



ACS Fan Tray:

Top mounted fan tray with 4x Fans with Thermostat Control is available to aid the cooling of your rack-housed equipment. It does not occupy any of the useable U height. Fan trays are supplied with four (or six fans optional). The 4 fans are 14Watts and air throughput up to 140m³/hour with lower average noise level at room temperature. Space has been provided at the rear of the 19” unit to allow a working area for the power management and data cables. Cable access has also been provided in the top cover that does not restrict the use of top mounted fan trays.



ACS Top Cover:

In ACS Racks, the top cover allows air flow through a matrix of square holes on top and allows air flow through side slots as well. The top cover is fully vented with 63% open area perforation in addition to one cable entry area. Top cover has different areas for cable entry to pass comfortably through. The Bottom is opened to offer maximum space for cables to pass comfortably through 5+2 Blank Plate Panels. Blank Plate Panels are also available to cover the unused cable entries.



ACS Fixed Shelves:

ACS fixed shelves are used in applications where heavy loads are required. This fixed shelf offers a load capacity of over 100 Kg. The slots in the fixed shelf allow for good air- flow.



ALL Connect Systems has made ordering easier by expanding its part number matrix so that you can now order any Cabinet preassembled with your choice:

Part Number #	Capacity	width x depth x height	Item Description
ACS-CC-05A-1866	18U	600 x 600 x 988mm	ACS Rack 18U, Glassed Door , thickness 1.2 mm, 600x600, 1 fixed shelf, 2 Fans, 2 Key Locks, Two Side Door Panels, Power Strip 8 outlets UK Style , with package of: (50 cages, 50 nuts, 50 screws, 50 washers)
ACS-CC-05A-1868	18U	600 x 800 x 988mm	ACS Rack 18U, Glassed Door , thickness 1.2 mm, 600x800, 1 fixed shelf, 2 Fans, 2 Key Locks, Two Side Door Panels, Power Strip 9 outlets UK Style , with package of: (50 cages, 50 nuts, 50 screws, 50 washers)
ACS-CC-05A-186100	18U	600 x 1000 x 988mm	ACS Rack 18U, Glassed Door , thickness 1.2 mm, 600x1000, 1 fixed shelf, 2 Fans, 2 Key Locks, Two Side Door Panels, Power Strip 8 outlets UK Style , with package of: (50 cages, 50 nuts, 50 screws, 50 washers)
ACS-CC-05A-2266	22U	600 x 600 x 1166mm	ACS Rack 22U, Glassed Door , thickness 1.2 mm, 600x600, 1 fixed shelf, 2 Fans, 2 Key Locks, Two Side Door Panels, Power Strip 8 outlets UK Style , with package of: (50 cages, 50 nuts, 50 screws, 50 washers)
ACS-CC-05A-2268	22U	600 x 800 x 1166mm	ACS Rack 22U, Glassed Door , thickness 1.2 mm, 600x800, 1 fixed shelf, 2 Fans, 2 Key Locks, Two Side Door Panels, Power Strip 8 outlets UK Style , with package of: (50 cages, 50 nuts, 50 screws, 50 washers)
ACS-CC-05A-226100	22U	600 x 1000 x 1166mm	ACS Rack 22U, Glassed Door , thickness 1.2 mm, 600x1000, 1 fixed shelf, 4 Fans, 2 Key Locks, Two Side Door Panels, Power Strip 8 outlets UK Style , with package of: (50 cages, 50 nuts, 50 screws, 50 washers)
ACS-CC-05A-2466	24U	600 x 600 x 1166mm	ACS Rack 24U, Glassed Door , thickness 1.2 mm, 600x600, 1 fixed shelf, 2 Fans, 2 Key Locks, Two Side Door Panels, Power Strip 8 outlets UK Style , with package of: (50 cages, 50 nuts, 50 screws, 50 washers)
ACS-CC-05A-2468	24U	600 x 800 x 1166mm	ACS Rack 24U, Glassed Door , thickness 1.2 mm, 600x800, 1 fixed shelf, 2 Fans, 2 Key Locks, Two Side Door Panels, Power Strip 8 outlets UK Style , with package of: (50 cages, 50 nuts, 50 screws, 50 washers)
ACS-CC-05A-246100	24U	600 x 1000 x 1166mm	ACS Rack 24U, Glassed Door , thickness 1.2 mm, 600x1000, 1 fixed shelf, 2 Fans, 2 Key Locks, Two Side Door Panels, Power Strip 8 outlets UK Style , with package of: (50 cages, 50 nuts, 50 screws, 50 washers)
ACS-CC-05A-2766	27U	600 x 600 x 1388mm	ACS Rack 27U, Glassed Door , thickness 1.2 mm, 600x600, 1 fixed shelf, 2 Fans, 2 Key Locks, Two Side Door Panels, Power Strip 8 outlets UK Style , with package of: (50 cages, 50 nuts, 50 screws, 50 washers)

ACS-CC-05A-2768	27U	600 x 800 x 1388mm	ACS Rack 27U, Glassed Door, thickness 1.2 mm, 600x800, 1 fixed shelf, 4 Fans, 2 Key Locks, Two Side Door Panels, Power Strip 8 outlets UK Style , with package of: (50 cages, 50 nuts, 50 screws, 50 washers)
ACS-CC-05A-276100	27U	600 x 1000 x 1388mm	ACS Rack 27U, Glassed Door, thickness 1.2 mm, 600x1000, 1 fixed shelf, 2 Fans, 2 Key Locks, Two Side Door Panels, Power Strip 8 outlets UK Style , with package of: (50 cages, 50 nuts, 50 screws, 50 washers)
ACS-CC-05A-3266	32U	600 x 600 x 1610mm	ACS Rack 32U, Glassed Door, thickness 1.2 mm, 600x600, 1 fixed shelf, 2 Fans, 2 Key Locks, Two Side Door Panels, Power Strip 8 outlets UK Style , with package of: (50 cages, 50 nuts, 50 screws, 50 washers)
ACS-CC-05A-3268	32U	600 x 800 x 1610mm	ACS Rack 32U, Glassed Door, thickness 1.2 mm, 600x800, 1 fixed shelf, 4 Fans, 2 Key Locks, Two Side Door Panels, Power Strip 8 outlets UK Style , with package of: (50 cages, 50 nuts, 50 screws, 50 washers)
ACS-CC-05A-326100	32U	600 x 1000 x 1610mm	ACS Rack 32U, Glassed Door, thickness 1.2 mm, 600x1000, 1 fixed shelf, 4 Fans, 2 Key Locks, Two Side Door Panels, Power Strip 8 outlets UK Style , with package of: (50 cages, 50 nuts, 50 screws, 50 washers)
ACS-CC-05A-3766	37U	600 x 600 x 1833mm	ACS Rack 37U, Glassed Door, thickness 1.2 mm, 600x600, 1 fixed shelf, 2 Fans, 2 Key Locks, Two Side Door Panels, Power Strip 8 outlets UK Style , with package of: (50 cages, 50 nuts, 50 screws, 50 washers)
ACS-CC-05A-3768	37U	600 x 800 x 1833mm	ACS Rack 37U, Glassed Door, thickness 1.2 mm, 600x800, 1 fixed shelf, 4 Fans, 2 Key Locks, Two Side Door Panels, Power Strip 8 outlets UK Style , with package of: (50 cages, 50 nuts, 50 screws, 50 washers)
ACS-CC-05A-376100	37U	600 x 1000 x 1833mm	ACS Rack 37U, Glassed Door, thickness 1.2 mm, 600x1000, 1 fixed shelf, 4 Fans, 2 Key Locks, Two Side Door Panels, Power Strip 8 outlets UK Style , with package of: (50 cages, 50 nuts, 50 screws, 50 washers)
ACS-CC-05A-3788	37U	800 x 800 x 1833mm	ACS Rack 37U, Glassed Door, thickness 1.2 mm, 800x800, 1 fixed shelf, 4 Fans, 2 Key Locks, Two Side Door Panels, Power Strip 8 outlets UK Style , with package of: (50 cages, 50 nuts, 50 screws, 50 washers), 2 Vertical Cable Management
ACS-CC-05A-378100	37U	800 x 1000 x 1833mm	ACS Rack 37U, Glassed Door, thickness 1.2 mm, 800x1000, 1 fixed shelf, 4 Fans, 2 Key Locks, Two Side Door Panels, Power Strip 8 outlets UK Style , with package of: (50 cages, 50 nuts, 50 screws, 50 washers), 2 Vertical Cable Management
ACS-CC-05A-4268	42U	600 x 800 x 2055mm	ACS Rack 42U, Glassed Door, thickness 1.2 mm, 600x800, 1 fixed shelf, 4 Fans, 2 Key Locks, Two Side Door Panels, Power Strip 8 outlets UK Style , with package of: (50 cages, 50 nuts, 50 screws, 50 washers)

ACS-CC-05A-426100	42U	600 x 1000 x 2055mm	ACS Rack 42U, Glassed Door, thickness 1.2 mm, 600x1000, 1 fixed shelf, 4 Fans, 2 Key Locks, Two Side Door Panels, Power Strip 8 outlets UK Style , with package of: (50 cages, 50 nuts, 50 screws, 50 washers)
ACS-CC-05A-4288	42U	800 x 800 x 2055mm	ACS Rack 42U, Glassed Door, thickness 1.2 mm, 800x800, 1 fixed shelf, 4 Fans, 2 Key Locks, Two Side Door Panels, Power Strip 8 outlets UK Style , with package of: (50 cages, 50 nuts, 50 screws, 50 washers), 2 Vertical Cable Management
ACS-CC-05A-428100	42U	800 x 1000 x 2055mm	ACS Rack 42U, Glassed Door, thickness 1.2 mm, 800x1000, 1 fixed shelf, 4 Fans, 2 Key Locks, Two Side Door Panels, Power Strip 8 outlets UK Style , with package of: (50 cages, 50 nuts, 50 screws, 50 washers), 2 Vertical Cable Management
ACS-CC-05A-4768	47U	600 x 800 x 2277mm	ACS Rack 47U, Glassed Door, thickness 1.2 mm, 600x800, 1 fixed shelf, 4 Fans, 2 Key Locks, Two Side Door Panels, Power Strip 8 outlets UK Style , with package of: (50 cages, 50 nuts, 50 screws, 50 washers)
ACS-CC-05A-476100	47U	600 x 1000 x 2277mm	ACS Rack 47U, Glassed Door, thickness 1.2 mm, 600x1000, 1 fixed shelf, 4 Fans, 2 Key Locks, Two Side Door Panels, Power Strip 8 outlets UK Style , with package of: (50 cages, 50 nuts, 50 screws, 50 washers)
ACS-CC-05A-4788	47U	800 x 800 x 2277mm	ACS Rack 47U, Glassed Door, thickness 1.2 mm, 800x800, 1 fixed shelf, 4 Fans, 2 Key Locks, Two Side Door Panels, Power Strip 8 outlets UK Style , with package of: (50 cages, 50 nuts, 50 screws, 50 washers), 2 Vertical Cable Management
ACS-CC-05A-478100	47U	800 x 1000 x 2277mm	ACS Rack 47U, Glassed Door, thickness 1.2 mm, 800x1000, 1 fixed shelf, 4 Fans, 2 Key Locks, Two Side Door Panels, Power Strip 8 outlets UK Style , with package of: (50 cages, 50 nuts, 50 screws, 50 washers), 2 Vertical Cable Management

Find more information about ALL Connect Systems Freestanding Cabinets at:



www.allconnectsystems.com



sales@allconnectsystems.com

All products quoted are subject to availability based on manufacturing capacity and shipping dates should be considered estimates only. While every effort has been made to ensure the accuracy of all information, ALL Connect Systems does not accept liability for any errors or omissions and reserves the right to change information and descriptions of listed services and products

ALL Connect Systems

ACS Perforated Door Style Rack Cabinets

- Comply with ANSI/EIA RS-310-D, DIN41497 part 1, IEC297-2, DIN41494 part 7, GB/T3047.2-92 standards.
- Compatible with 19-inch standard, metric standard and ETSI standard Exquisite design with precision, dimensions and craftsmanship.
- Color is black.
- Perforated Vented Front/Rear Doors enable ventilation and reliable operation.
- Swiveling wheels and legs can be jointly installed to withstand up to 900kg maximum carrying capacity and 450kg mobile carrying capacity.
- Several lockable wiring holes on top/bottom, size of the large hole at the bottom adjustable.
- Easy-to-disassemble front/rear/left/right doors enable convenient operation from any side of the cabinet.
- Optional installation of base enables the cabinet to stay in a fixed position while meeting requirements of under-base wiring/ventilation.
- Linkage cabinet, full series of optional accessories.
- Door opening angle 180°
- Removable side panels with lock.
- 4 Fans are installed in two ways operation.
- 1 Fixed Shelf.
- Power Distribution Unit with 8 outlets.

ALL Connect Systems Family Models with different Capacities, depth, width:

Part Numbers				
Capacity	Width(mm)	Depth(mm)		
		600mm	800mm	1000mm
47U	600mm	ACS-RFH-05B-4766	ACS-RFH-05B-4768	ACS-RFH-05B-476100
42U		ACS-RFH-05B-4266	ACS-RFH-05B-4268	ACS-RFH-05B-426100
36U		ACS-RFH-05B-3666	ACS-RFH-05B-3668	ACS-RFH-05B-366100
47U	800mm	-	ACS-RFH-05B-4788	ACS-RFH-05B-478100
42U		-	ACS-RFH-05B-4288	ACS-RFH-05B-428100
36U		-	ACS-RFH-05B-3688	ACS-RFH-05B-368100

Please check the full part numbers on index



Quick Release Doors: Available in four styles, doors are reversible to open right or left and interchangeable front-to-rear. Electronic locks can be added to all doors. A space-saving double door is also available.

High-Flow Perforated Metal Door: High-Flow Perforated Metal Door provides the security of a solid metal door with 63% airflow. Use High-Flow Perforated Metal Door on the front or rear of cabinets to encourage front-to-rear airflow through rack-mount equipment.

19" Rack-Mount Power Strip:

Distribute power to multiple pieces of equipment using only one rack-mount space (1 RMU). Available surge protected and with twist-lock plugs. High-voltage, multi-input, and three-phase models are also available.

19" Horizontal Wire Management Panel:

Place above or below patch Panels and network switches to organize patch cords and equipment cords. Use with the Vertical Cable Manager. Cable spools provide a smooth horizontal-to-vertical transition.

Find more information about ALL Connect Systems Freestanding Cabinets at:
www.allconnectsystems.com



ALL Connect Systems has made ordering easier by expanding its part number matrix so that you can now order any Cabinet preassembled with your choice:

Part Number #	Capacity	width x depth x height	Item Description
ACS-CC-05B-1866	18U	600 x 600 x 988mm	ACS Rack 18U, Vented Door , thickness 1.2 mm, 600x600, 1 fixed shelf, 2 Fans, 2 Key Locks, Two Side Door Panels, Power Strip 8 outlets UK Style , with package of: (50 cages, 50 nuts, 50 screws, 50 washers)
ACS-CC-05B-1868	18U	600 x 800 x 988mm	ACS Rack 18U, Vented Door , thickness 1.2 mm, 600x800, 1 fixed shelf, 2 Fans, 2 Key Locks, Two Side Door Panels, Power Strip 9 outlets UK Style , with package of: (50 cages, 50 nuts, 50 screws, 50 washers)
ACS-CC-05B-186100	18U	600 x 1000 x 988mm	ACS Rack 18U, Vented Door , thickness 1.2 mm, 600x1000, 1 fixed shelf, 2 Fans, 2 Key Locks, Two Side Door Panels, Power Strip 8 outlets UK Style , with package of: (50 cages, 50 nuts, 50 screws, 50 washers)
ACS-CC-05B-2266	22U	600 x 600 x 1166mm	ACS Rack 22U, Vented Door , thickness 1.2 mm, 600x600, 1 fixed shelf, 2 Fans, 2 Key Locks, Two Side Door Panels, Power Strip 8 outlets UK Style , with package of: (50 cages, 50 nuts, 50 screws, 50 washers)
ACS-CC-05B-2268	22U	600 x 800 x 1166mm	ACS Rack 22U, Vented Door , thickness 1.2 mm, 600x800, 1 fixed shelf, 2 Fans, 2 Key Locks, Two Side Door Panels, Power Strip 8 outlets UK Style , with package of: (50 cages, 50 nuts, 50 screws, 50 washers)
ACS-CC-05B-226100	22U	600 x 1000 x 1166mm	ACS Rack 22U, Vented Door , thickness 1.2 mm, 600x1000, 1 fixed shelf, 4 Fans, 2 Key Locks, Two Side Door Panels, Power Strip 8 outlets UK Style , with package of: (50 cages, 50 nuts, 50 screws, 50 washers)
ACS-CC-05B-2466	24U	600 x 600 x 1166mm	ACS Rack 24U, Vented Door , thickness 1.2 mm, 600x600, 1 fixed shelf, 2 Fans, 2 Key Locks, Two Side Door Panels, Power Strip 8 outlets UK Style , with package of: (50 cages, 50 nuts, 50 screws, 50 washers)
ACS-CC-05B-2468	24U	600 x 800 x 1166mm	ACS Rack 24U, Vented Door , thickness 1.2 mm, 600x800, 1 fixed shelf, 2 Fans, 2 Key Locks, Two Side Door Panels, Power Strip 8 outlets UK Style , with package of: (50 cages, 50 nuts, 50 screws, 50 washers)
ACS-CC-05B-246100	24U	600 x 1000 x 1166mm	ACS Rack 24U, Vented Door , thickness 1.2 mm, 600x1000, 1 fixed shelf, 2 Fans, 2 Key Locks, Two Side Door Panels, Power Strip 8 outlets UK Style , with package of: (50 cages, 50 nuts, 50 screws, 50 washers)
ACS-CC-05B-2766	27U	600 x 600 x 1388mm	ACS Rack 27U, Vented Door , thickness 1.2 mm, 600x600, 1 fixed shelf, 2 Fans, 2 Key Locks, Two Side Door Panels, Power Strip 8 outlets UK Style , with package of: (50 cages, 50 nuts, 50 screws, 50 washers)

ACS-CC-05B-2768	27U	600 x 800 x 1388mm	ACS Rack 27U, Vented Door , thickness 1.2 mm, 600x800, 1 fixed shelf, 4 Fans, 2 Key Locks, Two Side Door Panels, Power Strip 8 outlets UK Style , with package of: (50 cages, 50 nuts, 50 screws, 50 washers)
ACS-CC-05B-276100	27U	600 x 1000 x 1388mm	ACS Rack 27U, Vented Door , thickness 1.2 mm, 600x1000, 1 fixed shelf, 2 Fans, 2 Key Locks, Two Side Door Panels, Power Strip 8 outlets UK Style , with package of: (50 cages, 50 nuts, 50 screws, 50 washers)
ACS-CC-05B-3266	32U	600 x 600 x 1610mm	ACS Rack 32U, Vented Door , thickness 1.2 mm, 600x600, 1 fixed shelf, 2 Fans, 2 Key Locks, Two Side Door Panels, Power Strip 8 outlets UK Style , with package of: (50 cages, 50 nuts, 50 screws, 50 washers)
ACS-CC-05B-3268	32U	600 x 800 x 1610mm	ACS Rack 32U, Vented Door , thickness 1.2 mm, 600x800, 1 fixed shelf, 4 Fans, 2 Key Locks, Two Side Door Panels, Power Strip 8 outlets UK Style , with package of: (50 cages, 50 nuts, 50 screws, 50 washers)
ACS-CC-05B-326100	32U	600 x 1000 x 1610mm	ACS Rack 32U, Vented Door , thickness 1.2 mm, 600x1000, 1 fixed shelf, 4 Fans, 2 Key Locks, Two Side Door Panels, Power Strip 8 outlets UK Style , with package of: (50 cages, 50 nuts, 50 screws, 50 washers)
ACS-CC-05B-3766	37U	600 x 600 x 1833mm	ACS Rack 37U, Vented Door , thickness 1.2 mm, 600x600, 1 fixed shelf, 2 Fans, 2 Key Locks, Two Side Door Panels, Power Strip 8 outlets UK Style , with package of: (50 cages, 50 nuts, 50 screws, 50 washers)
ACS-CC-05B-3768	37U	600 x 800 x 1833mm	ACS Rack 37U, Vented Door , thickness 1.2 mm, 600x800, 1 fixed shelf, 4 Fans, 2 Key Locks, Two Side Door Panels, Power Strip 8 outlets UK Style , with package of: (50 cages, 50 nuts, 50 screws, 50 washers)
ACS-CC-05B-376100	37U	600 x 1000 x 1833mm	ACS Rack 37U, Vented Door , thickness 1.2 mm, 600x1000, 1 fixed shelf, 4 Fans, 2 Key Locks, Two Side Door Panels, Power Strip 8 outlets UK Style , with package of: (50 cages, 50 nuts, 50 screws, 50 washers)
ACS-CC-05B-3788	37U	800 x 800 x 1833mm	ACS Rack 37U, Vented Door , thickness 1.2 mm, 800x800, 1 fixed shelf, 4 Fans, 2 Key Locks, Two Side Door Panels, Power Strip 8 outlets UK Style , with package of: (50 cages, 50 nuts, 50 screws, 50 washers), 2 Vertical Cable Management
ACS-CC-05B-378100	37U	800 x 1000 x 1833mm	ACS Rack 37U, Vented Door , thickness 1.2 mm, 800x1000, 1 fixed shelf, 4 Fans, 2 Key Locks, Two Side Door Panels, Power Strip 8 outlets UK Style , with package of: (50 cages, 50 nuts, 50 screws, 50 washers), 2 Vertical Cable Management
ACS-CC-05B-4268	42U	600 x 800 x 2055mm	ACS Rack 42U, Vented Door , thickness 1.2 mm, 600x800, 1 fixed shelf, 4 Fans, 2 Key Locks, Two Side Door Panels, Power Strip 8 outlets UK Style , with package of: (50 cages, 50 nuts, 50 screws, 50 washers)

ACS-CC-05B-426100	42U	600 x 1000 x 2055mm	ACS Rack 42U, Vented Door , thickness 1.2 mm, 600x1000, 1 fixed shelf, 4 Fans, 2 Key Locks, Two Side Door Panels, Power Strip 8 outlets UK Style , with package of: (50 cages, 50 nuts, 50 screws, 50 washers)
ACS-CC-05B-4288	42U	800 x 800 x 2055mm	ACS Rack 42U, Vented Door , thickness 1.2 mm, 800x800, 1 fixed shelf, 4 Fans, 2 Key Locks, Two Side Door Panels, Power Strip 8 outlets UK Style , with package of: (50 cages, 50 nuts, 50 screws, 50 washers), 2 Vertical Cable Management
ACS-CC-05B-428100	42U	800 x 1000 x 2055mm	ACS Rack 42U, Vented Door , thickness 1.2 mm, 800x1000, 1 fixed shelf, 4 Fans, 2 Key Locks, Two Side Door Panels, Power Strip 8 outlets UK Style , with package of: (50 cages, 50 nuts, 50 screws, 50 washers), 2 Vertical Cable Management
ACS-CC-05B-4768	47U	600 x 800 x 2277mm	ACS Rack 47U, Vented Door , thickness 1.2 mm, 600x800, 1 fixed shelf, 4 Fans, 2 Key Locks, Two Side Door Panels, Power Strip 8 outlets UK Style , with package of: (50 cages, 50 nuts, 50 screws, 50 washers)
ACS-CC-05B-476100	47U	600 x 1000 x 2277mm	ACS Rack 47U, Vented Door , thickness 1.2 mm, 600x1000, 1 fixed shelf, 4 Fans, 2 Key Locks, Two Side Door Panels, Power Strip 8 outlets UK Style , with package of: (50 cages, 50 nuts, 50 screws, 50 washers)
ACS-CC-05B-4788	47U	800 x 800 x 2277mm	ACS Rack 47U, Vented Door , thickness 1.2 mm, 800x800, 1 fixed shelf, 4 Fans, 2 Key Locks, Two Side Door Panels, Power Strip 8 outlets UK Style , with package of: (50 cages, 50 nuts, 50 screws, 50 washers), 2 Vertical Cable Management
ACS-CC-05B-478100	47U	800 x 1000 x 2277mm	ACS Rack 47U, Vented Door , thickness 1.2 mm, 800x1000, 1 fixed shelf, 4 Fans, 2 Key Locks, Two Side Door Panels, Power Strip 8 outlets UK Style , with package of: (50 cages, 50 nuts, 50 screws, 50 washers), 2 Vertical Cable Management

Find more information about ALL Connect Systems Freestanding Cabinets at:



www.allconnectsystems.com



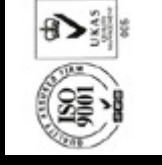
sales@allconnectsystems.com

All products quoted are subject to availability based on manufacturing capacity and shipping dates should be considered estimates only. While every effort has been made to ensure the accuracy of all information, ALL Connect Systems does not accept liability for any errors or omissions and reserves the right to change information and descriptions of listed services and products



ALL CONNECT SYSTEMS®

www.allconnectsystems.com



ACS Server Rack

ALL Connect Systems

ALL Connect Systems Vented Rack Cabinets



ALL Connect Systems Server Rack Cabinets

- Comply with ANSI/EIA RS-310-D, DIN41497 part 1, IEC297-2, DIN41494 part 7, GB/T3047.2-92 standards.
- Compatible with 19-inch standard, metric standard and ETSI standard Exquisite design with precision, dimensions and craftsmanship, with Black color.
- Vented front/rear doors enable ventilation and reliable operation.
- Swiveling wheels and legs can be jointly installed to withstand up to 800kg maximum carrying capacity and 350kg mobile carrying capacity, with full series of optional accessories.
- Several lockable wiring holes on top/bottom, size of the large hole at the bottom adjustable.
- Easy-to-disassemble front/rear/left/right doors enable convenient operation from any side of the cabinet.
- Optional installation of base enables the cabinet to stay in a fixed position while meeting requirements of under-base wiring/ventilation.
- Linkage cab
- Front and rear Doors are opening angle 180° , while Removable side panels with lock.
- 4 Fans are installed in two ways operation, 2 Fixed Shelves, Power Distribution Unit with 9 outlets.

ALL Connect Systems Family Models with different Capacities, depth, width:

Part Number				
Capacity	Width(mm)	Depth(mm)		
		600mm	800mm	1000mm
47U	600mm	ACS-RFH-06A-4766	ACS-RFH-06A-4768	ACS-RFH-06A-476100
42U		ACS-RFH-06A-4266	ACS-RFH-06A-4268	ACS-RFH-06A-426100
36U		ACS-RFH-06A-3666	ACS-RFH-06A-3668	ACS-RFH-06A-366100
47U	800mm	-	ACS-RFH-06A-4788	ACS-RFH-06A-478100
42U		-	ACS-RFH-06A-4288	ACS-RFH-06A-428100
36U		-	ACS-RFH-06A-3688	ACS-RFH-06A-368100



ALL Connect Systems has made ordering easier by expanding its part number matrix so that you can now order any Cabinet preassembled with your choice.



Quick Release Doors: Available in four styles, doors are reversible to open right or left and interchangeable front-to-rear. Electronic locks can be added to all doors. A space-saving double door is also available.

High-Flow Perforated Metal Door: High-Flow Perforated Metal Door provides the security of a solid metal door with 63% airflow. Use High-Flow Perforated Metal Door on the front or rear of cabinets to encourage front-to-rear airflow through rack-mount equipment.

19" Rack-Mount Power Strip: Distribute power to multiple pieces of equipment using only one rack-mount space (1 RMU). Available surge protected and with twist-lock plugs. High-voltage, multi-input, and three-phase models are also available.

19" Horizontal Wire Management Panel: Place above or below patch Panels and network switches to organize patch cords and equipment cords. Use with the Vertical Cable Manager. Cable spools provide a smooth horizontal-to-vertical transition.

Find more information about ALL Connect Systems Freestanding Cabinets at:
www.allconnectsystems.com

All products quoted are subject to availability based on manufacturing capacity and shipping dates should be considered estimates only. While every effort has been made to ensure the accuracy of all information, ALL Connect Systems does not accept liability for any errors or omissions and reserves the right to change information and descriptions of listed services and products





ALL CONNECT SYSTEMS®

www.allconnectsystems.com

ACS Wall Mount Rack



ACS Wall Mount Rack Cabinets

ACS Wall Mount/Swing Out Enclosures provide 19" 310-D compliant mounting in a distribution enclosure. A simple finger "push-pull" type catch located inside the cabinet opens the 18.00" deep center swing section. The center swing out feature provides outstanding front and rear access to cables and equipment.

The reversible cabinet mounting design makes left or right-hand swing out possible.

This convenient feature also conserves valuable wall space, easy wiring, installation and maintenance. Front and rear sections lock independently for added security.

It's a very popular economical solution for mounting patch panels and switches, Available in different heights: 12U, 15U, 18U, and 22U. The swing frame provides easy access to the back of the equipment.

COLOR: Black



WALL MOUNT/SWING
RACK CABINETS

ACS SERIES WALL MOUNT/SWING OUT Rack Cabinets

PART NO.	DESCRIPTION
ACS-RWS-1266	Dimensions: 24"H x 21.25"W x 24.50"D, Weight Capacity: 150 lbs. Rack spaces: 12 U Shipping Weight: 85 lbs.
ACS-RWS-1566	Dimensions: 30"H x 21.25"W x 24.50"D, Weight Capacity: 150 lbs. Rack spaces: 15 U Shipping Weight: 95 lbs.
ACS-RWS-1866	Dimensions: 36"H x 21.25"W x 24.50"D, Weight Capacity: 250 lbs. Rack spaces: 18 U Shipping Weight: 125 lbs.
ACS-RWS-2266	Dimensions: 44"H x 21.25"W x 24.50"D, Weight Capacity: 300 lbs. Rack spaces: 22 U Shipping Weight: 160 lbs.

High-Flow Perforated Metal Sides: High-Flow Perforated Metal Sides provides the security of a solid metal door with 63% airflow. Use High-Flow Perforated Metal Sides of cabinets to encourage front-to-rear airflow through rack-mount equipment.

19" Rack-Mount Power Strip:

Distribute power to multiple pieces of equipment using only one rack-mount space (1 RMU). Available surge protected and with twist-lock plugs. High-voltage, multi-input, and three-phase models are also available.

ACS Wall Mount Racks are made from 1.2 mm thick metal sheet. The front door is equipped with a safety tempered glass, which can be easily completely removed and replaced. Both front and side doors have a locking systems and can be easily removed and installed to open from any direction. Side panels are removable to simplicity access; also cable entries are available on basement and roof. ACS Wall Mount Racks have two families:

1. ACS Wall Mount Racks Single Sectional.
2. ACS Wall Mount Racks Double Sectional.



1. ACS Single Sectional Wall Mount Cabinets:

PRODUCT INFORMATION:

- Nice design and improved functionality.
- Standard black color.
- Removable side doors with quick opening mechanism allow for easy installation and maintaining.
- Top and bottom cable entries.
- Cooling fans.
- With stand a max load of 100 kg.
- Material: high quality cold rolled steel.
- Thickness: square hole strips 2.0mm, others 1.2mm.
- Surface finish: de-grease, acid pickling, rust prevention process, pure water cleaning, static electricity plastic painting.

STANDARDS:

Complies with ANSI/EIA RS-310-D, IEC297-2, DIN41491-PART1, DIN4149- 4-PART7, GB/T3047.2-9 2.

ACS Part Numbers for Single Sectional Wall Mount Cabinet:

Part Number #	Capacity	width x depth x height	Item Description
ACS-CC-WS-0666	6U	600 x 600 x 368mm	ALL Connect Systems Rack Wall Mount Single Section 6U, 60 cm depth, with 1 Fan, with Power Strip 6 ways UK Style, with package of: (50 cages, 50 nuts, 50 screws, 50 washers)
ACS-CC-WS-0966	9U	600 x 600 x 501mm	ALL Connect Systems Rack Wall Mount Single Section 9U, 60 cm depth, with 1 Fan, with Power Strip 6 ways UK Style, with package of: (50 cages, 50 nuts, 50 screws, 50 washers)
ACS-CC-WS-1266	12U	600 x 600 x 635mm	ALL Connect Systems Rack Wall Mount Single Section 12U, 60 cm depth, with 1 Fan, with Power Strip 6 ways UK Style, with package of: (50 cages, 50 nuts, 50 screws, 50 washers)
ACS-CC-WS-1566	15U	600 x 600 x 769mm	ALL Connect Systems Rack Wall Mount Single Section 15U, 60 cm depth, with Power Strip 6 ways UK Style, with 1 Fan, with package of: (50 cages, 50 nuts, 50 screws, 50 washers)
ACS-CC-WS-1866	18U	600 x 600 x 901mm	ALL Connect Systems Rack Wall Mount Single Section 18U, with Power Strip 6 ways UK Style, 60 cm depth, with 1 Fan, with package of: (50 cages, 50 nuts, 50 screws, 50 washers)
ACS-CC-WS-2266	22U	600 x 600 x 1082mm	ALL Connect Systems Rack Wall Mount Single Section 22U, 60 cm depth, with 1 Fan, with Power Strip 6 ways UK Style, with package of: (50 cages, 50 nuts, 50 screws, 50 washers)
ACS-CC-WS-2766	27U	600 x 600 x 1304mm	ALL Connect Systems Rack Wall Mount Single Section 27U, 60 cm depth, with 1 Fan, with Power Strip 6 ways UK Style, with package of: (50 cages, 50 nuts, 50 screws, 50 washers)



2. ACS Double Sectional Wall Mount Cabinets:

PRODUCT INFORMATION:

- Double section structure, wall mount.
- Stylish and accurate design.
- Standard black color.
- Optional support feet for floor installation.
- Removable side doors with quick opening mechanism allow for easy installation and maintaining.
- Optional cable entries from top and bottom plate.
- Cooling fans.
- Withstand a max load of 120.
- Material: high quality cold rolled steel.
- Thickness: square hole strips 2.0mm,others 1.2mm.
- Surface finish: de-grease, acid pickling, rust prevention process, pure water cleaning, static electricity plastic painting.

STANDARDS:

Complies with ANSI/EIA RS-310-D, IEC297-2, DIN41491-PART1, DIN4149- 4-PART7, GB/T3047.2-9 2.

ACS Part Numbers for Double Sectional Wall Mount Cabinet:

ACS-CC-WD-0666	6U	600 x 600 x 368mm	ALL Connect Systems Rack Wall Mount Double Section 6U, 60 cm depth, with 1 Fan, with Power Strip 6 ways UK Style, with package of: (50 cages, 50 nuts, 50 screws, 50 washers)
ACS-CC-WD-0966	9U	600 x 600 x 501mm	ALL Connect Systems Rack Wall Mount Double Section 9U, 60 cm depth, with 1 Fan, with Power Strip 6 ways UK Style, with package of: (50 cages, 50 nuts, 50 screws, 50 washers)
ACS-CC-WD-1266	12U	600 x 600 x 635mm	ALL Connect Systems Rack Wall Mount Double Section 12U, 60 cm depth, with 1 Fan, with Power Strip 6 ways UK Style, with package of: (50 cages, 50 nuts, 50 screws, 50 washers)
ACS-CC-WD-1566	15U	600 x 600 x 769mm	ALL Connect Systems Rack Wall Mount Double Section 15U, 60 cm depth, with 1 Fan, with Power Strip 6 ways UK Style, with package of: (50 cages, 50 nuts, 50 screws, 50 washers)
ACS-CC-WD-1866	18U	600 x 600 x 901mm	ALL Connect Systems Rack Wall Mount Double Section 18U, 60 cm depth, with 1 Fan, with Power Strip 6 ways UK Style, with package of: (50 cages, 50 nuts, 50 screws, 50 washers)
ACS-CC-WD-2266	22U	600 x 600 x 1082mm	ALL Connect Systems Rack Wall Mount Double Section 22U, 60 cm depth, with 1 Fan, with Power Strip 6 ways UK Style, with package of: (50 cages, 50 nuts, 50 screws, 50 washers)
ACS-CC-WD-2766	27U	600 x 600 x 1304mm	ALL Connect Systems Rack Wall Mount Double Section 27U, 60 cm depth, with 1 Fan, with Power Strip 6 ways UK Style, with package of: (50 cages, 50 nuts, 50 screws, 50 washers)

Find more information about ACS Wall Mounting Cabinets at:

www.acsibis.com

www.allconnectsystems.com

ENGLISH VERSION

ALL CONNECT SYSTEMS

ACS ONU Rack 2026

VERSIONE ITALIANA

ALL Connect Systems Surface ONU Flush Wall Mount Rack Cabinet

Engineered Mounting Solutions!

L (Width) = 450, 537 or 600mm
 P (Depth) = 120, 150, 160 or 300mm
 H (Height) = 450 or 600mm



Width	Depth	Height
450	120	450
450	120	600
450	150	450
450	150	600
450	160	450
450	160	600
450	300	450
450	300	600
537	120	450
537	120	600
537	150	450
537	150	600
537	160	450
537	160	600
537	300	450
537	300	600
600	120	450
600	120	600
600	150	450
600	150	600
600	160	450
600	160	600
600	300	450
600	300	600

Features:

- Convenient design allows easy access to equipment controls.
- Two models available: surface mount or flush between studs.
- Mostly recommended for offices, flats, villas, shops, etc.
- Mostly suitable for cables, patch panels/IDC modules, fiber, power, and any equipment are proposed to be installed.
- Tampered Acrylic Front Door, resistant design ideal for use in non-secure areas.
- Sticker is labeled on the front door mentioning that this door is Tampered Acrylic Front Door, and resistant design.
- Mount non-rackmount equipment using included clamp bars, and second level shelf.

- It comes in two colors: Black color RAL 9005 or Grey Color RAL 7035.
- Rack rail included for use with rackmount equipment.
- Engineered to provide effective passive thermal management.
- Knockout provided in back box for cable pass-through.
- Abundant cable management tie points integrated throughout enclosure.
- Front rail is adjustable from 1-1/2" to 3-1/2" to accommodate handles and knobs.
- Available in 9U or 12U with 19" wiring equipment cabinet.
- Up to 20" useable depth• 300 lb. weight capacity.
- Durable, neutral putty finish complements the aesthetics of most environments.
- UL Listed in the US and Canada.
- CE Certified.
- Includes electrical box for high-voltage connections 2 outlets. (Optional)

Find more information about ALL Connect Systems' Wall Mounting Cabinets at:
www.allconnectsystems.com

All products quoted are subject to availability based on manufacturing capacity and shipping dates should be considered estimates only. While every effort has been made to ensure the accuracy of all information, ACS does not accept liability for any errors or omissions and reserves the right to change information and descriptions of listed services and products

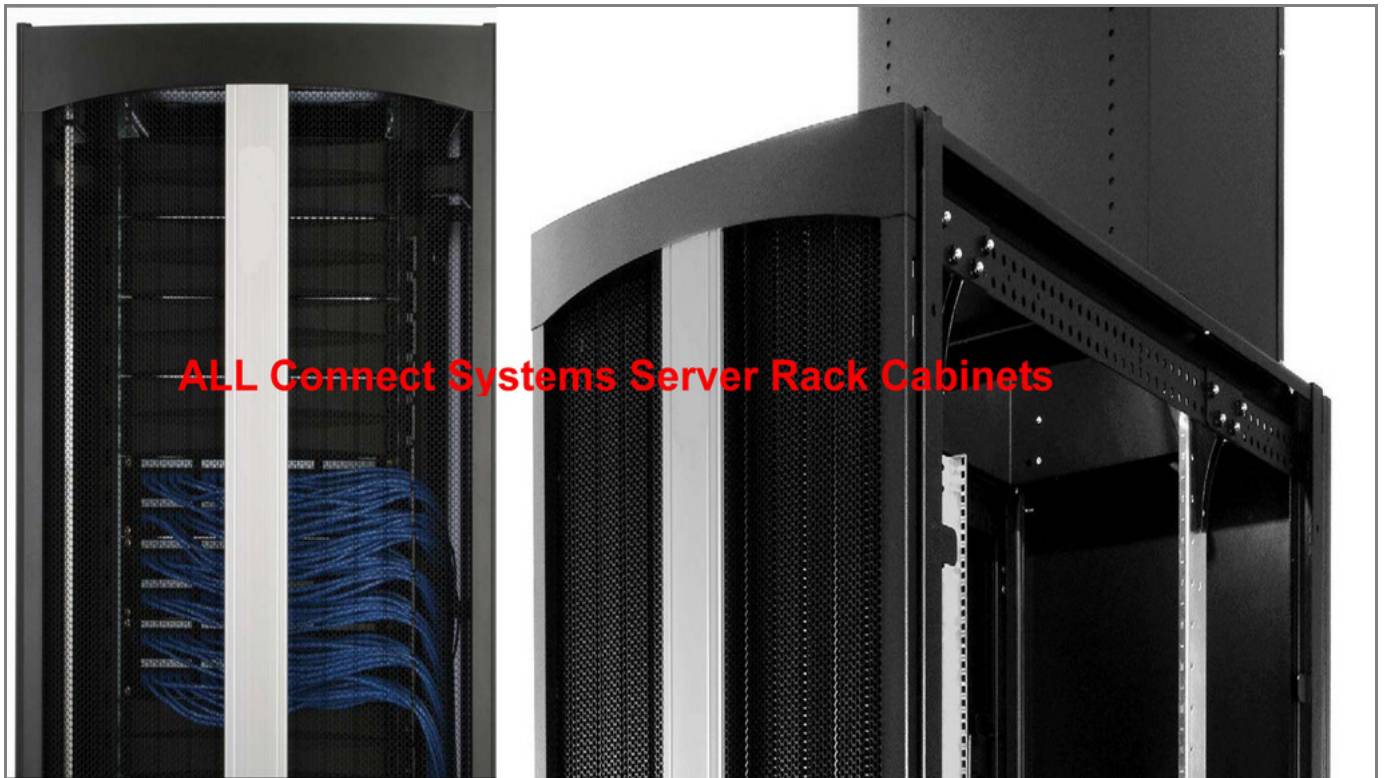
ENGLISH VERSION

ACS White Paper 2026 Thermal Management inside the Rack

VERSIONE ITALIANA

ALL Connect Systems

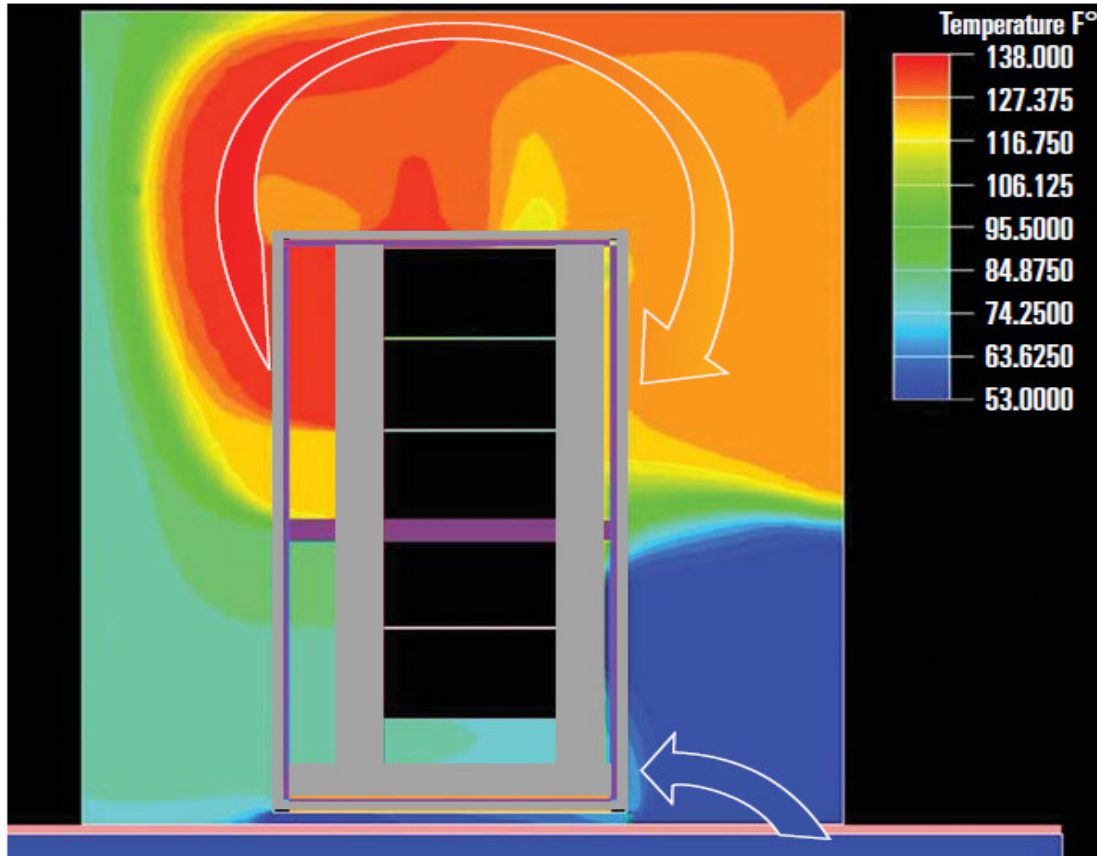
ACS White paper about Thermal Management inside the Rack:



Whether you are managing a small computer room or a large high-density data center, one thing is evident: the equipments are becoming more compact, which means more heat in every equipment cabinet. Computer equipments are typically designed to pull in adequate volumes of air for this heat transfer. (The main contributing principle of equipment cooling is the transfer of heat from heat sources like chips and heat sinks, to the air that moves across them). The maximum recommended air temperature to avoid hot spots is 75 °F (24 °C) — 78 °F (26 °C).

Unfortunately, you cannot simply set the thermostat twenty degrees below the hot spot level and pump a volume of air into the room that exceeds the total demand of the equipment.

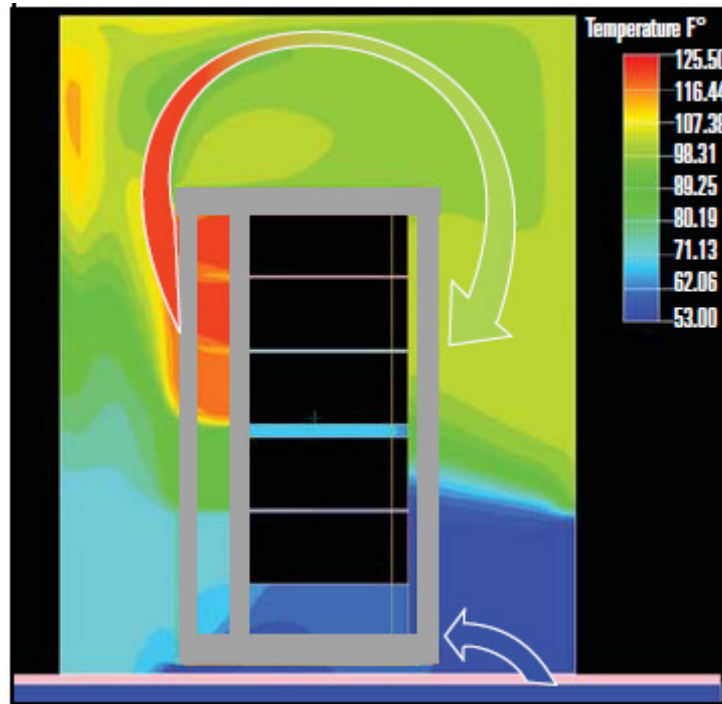
In fact, most data centers have more than two and a half times their required cooling capacity and still experience numerous hot spots. The immediate cause of hot spots is the mixing of cool air with the heated exhaust air expelled from equipment.



In the above Fig. illustrates how 53°F (12°C) air coming into the room becomes over 100°F (38°C) source air for equipment mounted toward the top of the cabinet. The temperature rise of air through any specific piece of equipment is essentially a constant; therefore it is clear that as exhaust air re-circulates through equipment it will continue to get hotter.

A frequent cause of this type of hot air re-circulation is bypass air that reduces the amount of air available where it is needed in the front of racks and cabinets. This results from incorrectly located access floor tile openings or unsealed cable access holes. The reduced availability of proper ventilation way means that equipment will pull in heated air from the room at large.

Another cause of hot air re-circulation is the presence of open rack space, as well as openings along the sides of equipment and inside the top and bottom of a cabinet. Equipment fans draw air from all sources and these openings allow the heated exhaust air to be pulled around to the front of equipment where air intakes are located.

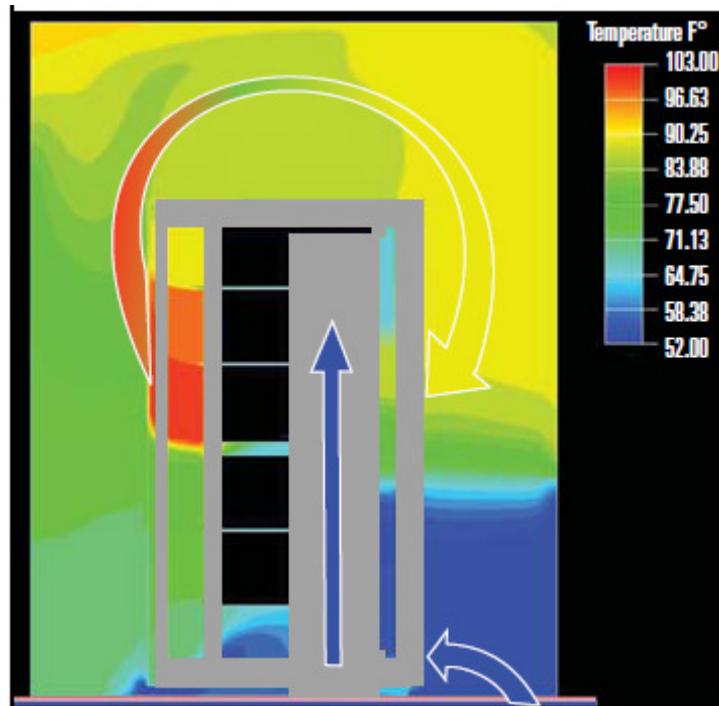


A third cause of hot air re-circulation occurs when the cumulative cool air volume demand of equipment exceeds the volume of air that can be delivered through a perforated access floor tile in front of the cabinet. In this case all chilled air is consumed at the bottom portion of the cabinet (see Fig. above) and the make-up air is pulled over the top of the cabinet from the hot aisle.

How ACS Rack Solutions Keep Your Equipments Cool:

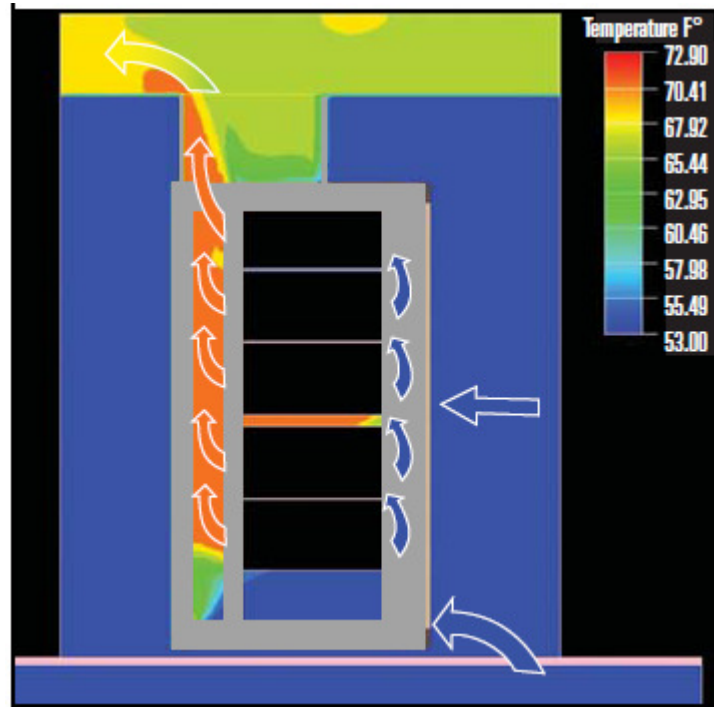
To maximize effective cooling capacity of your cooling system, it is important to manage the airflow through, over and around equipment cabinets. Improve cooling effectiveness in the data center using one of the following these ACS Solutions:

1. Eliminate Hot Air Recycling Through The Cabinet:



By blocking airflow through open rack spaces with filler panels, less hot air is re-circulated to the front of the cabinet. However, hot air can still go around the sides, top and bottom of the equipment mounting space. ACS blocks this space by creating an effective front-to-rear (cold/hot) barrier to airflow. When you use the ACS Snap-In Filler Panels, the temperature of air entering the top half of the cabinet is lowered because hot air is not re-circulated through the cabinet. Air still re-circulates over the cabinet, but airflow is now one-way through equipment.

2. ACS Racks Increase The Amount Of Cold Air Entering The Cabinet:



Cold air available to a cabinet is often limited to the amount of cold air entering the room through the vented access floor tile located directly in front of the cabinet.

ACS racks are designed to increase the amount of cold air available to each cabinet, and deliver additional cold air to the top half of the cabinet. This cold air lowers the temperature of air at the top of the cabinet.

In addition to eliminating hot air recirculation throughout the cabinet, this step will help to reduce the negative effects of hot air traveling over the cabinet into the cold aisle.

The resulting lower room temperature eliminates the need for supplemental liquid or active cooling solutions.

Find more information about ALL Connect Systems Freestanding Cabinets at:

www.allconnectsystems.com

All products quoted are subject to availability based on manufacturing capacity and shipping dates should be considered estimates only. While every effort has been made to ensure the accuracy of all information, ALL Connect Systems does not accept liability for any errors or omissions and reserves the right to change information and descriptions of listed services and products



ALL CONNECT SYSTEMS®

www.allconnectsystems.com

Contacts:

ITALY Headquarter

Via Dell'Ariento 6

Firenze - 500.127

ITALY

China Factories

Xuyi Xucheng Zhen Industrial Zone

Xuyi City, Jiangsu, China



Branches

Hong Kong

Houston, USA

Dubai, UAE

Cairo, Egypt